



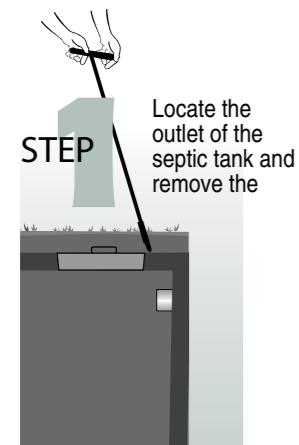
INSTALLATION

A100™, A300™, A600™-12 Series Filters

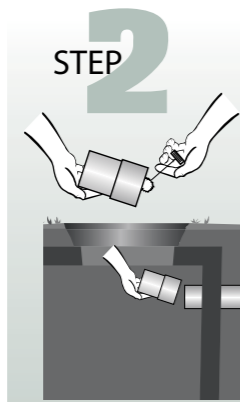


A100-12x20-VC A300-12x20-VC A600-12x20-VCF

New System Installation

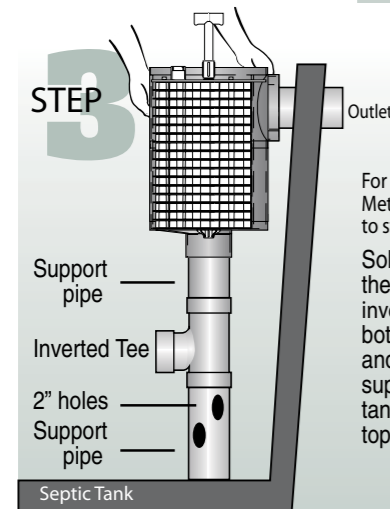
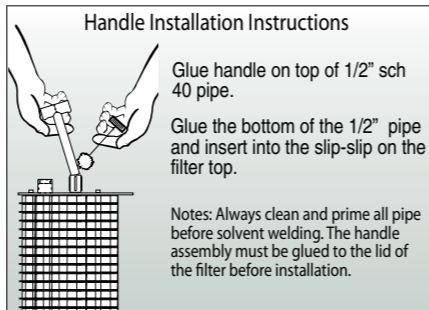


Note: Make sure tank is installed level.



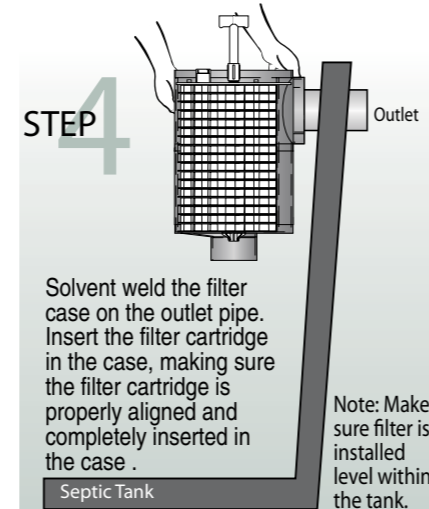
Before installation place the filter case on the outlet pipe, to make sure it will be centered under the access opening. If not, Solvent weld (glue) additional pipe to the outlet pipe.

Note: Always clean and prime all pipe before solvent welding. Minimum of 3" drop required in tank for proper SmartFilter operation.



For installations requiring the Supplementary Support Method only. If extra support for the filter is not needed, go to step four.

Solvent weld (glue) the reducer to the bottom of the filter case. Then weld a support pipe, an inverted tee, and another support pipe in the bottom of the reducer. Place the filter, reducer, and the support pipe on the outlet pipe. Adjust the support pipe so it rests level on the bottom of the tank. Remove and cut at least four 2" holes from top to bottom in the support pipe.



Solvent weld the filter case on the outlet pipe. Insert the filter cartridge in the case, making sure the filter cartridge is properly aligned and completely inserted in the case.

Note: Make sure filter is installed level within the tank.

Existing System Installation

• Same as New System, except the tank must be pumped before the installation of the filter.

Notes:

- If you have purchased an A100/300/600-12x28 or larger model filter Zabel recommends using the Supplementary Support Method seen in step 3.
- If you have purchased a Zabel® Smartfilter®, additional installation instructions can be found in the Smartfilter Alarm System box.
- The outlet access opening of the tank, under which the filter is centered, should be at least 15" in diameter to allow for easy removal of the filter cartridge.
- A riser to grade over the outlet access opening is recommended and may be required in certain states.
- If the filter can not be installed in the existing tank, it can be installed using a Zeus® Basin System. In this case, the New System Installation instructions will be used.
- Minimum of 3" drop required in tank for proper SmartFilter operation



Copyright 2003, Zabel Industries International, Ltd. All rights reserved

Product(s) covered by one or more U.S. and/or International patents. Other U.S. and International patents may be pending.

Call for a free ZABEL ZONE® • 1-800-221-5742 • Or Order Online: www.zabelzone.com

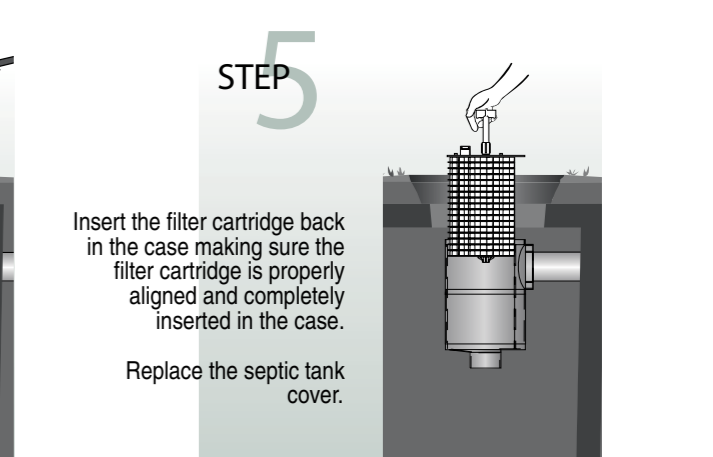
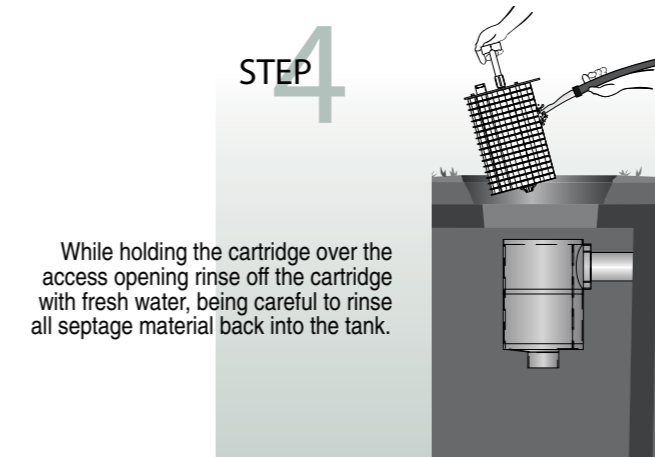
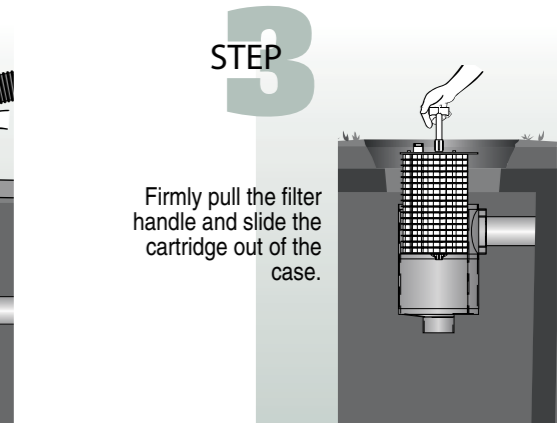
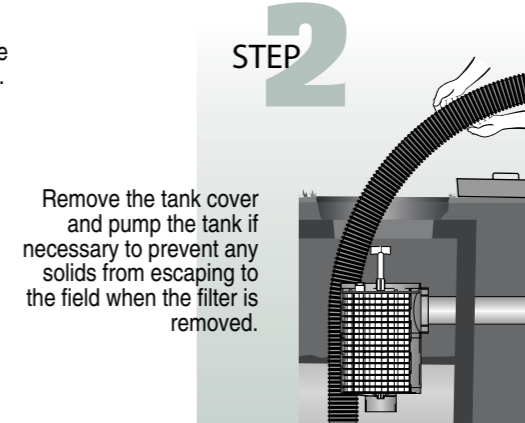
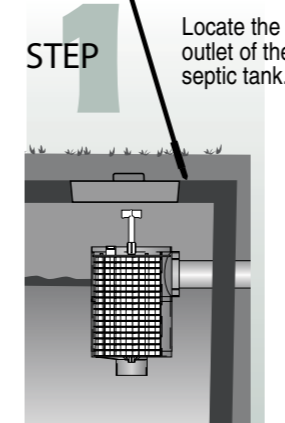


MAINTENANCE

A100™, A300™, A600™-12 Series Filters

The interval for servicing septic tanks is set by state and local code. Throughout the United States there is a wide difference of opinion on what this interval should be, but most regulatory agencies suggest two to five years. The Zabel® filter, which does not increase the frequency of servicing for the tank, should be cleaned when the septic tank is normally inspected and pumped. However, our filter is virtually self-cleaning. The continued action of the anaerobic organisms on the Zabel filter causes lodged particles to disintegrate and fall to the bottom of the tank. If your filter contains a SmartFilter® alarm, you will be notified by an alarm when the filter needs servicing.

To service the filter:
*Servicing any zabel filter should only be done by a certified septic tank pumper or installer.



Notes:

- If you have a Filtered Versa-Case™ Model Filter, be sure and spray clean the outlet opening before replacing the Filter.



Copyright 2003, Zabel Industries International, Ltd. All rights reserved

Product(s) covered by one or more U.S. and/or International patents. Other U.S. and International patents may be pending.

Call for a free ZABEL ZONE® • 1-800-221-5742 • Or Order Online: www.zabelzone.com